

# Student Artwork and Artist Statements

North View Junior High, Brooklyn Park MN

Ms. Latuff's Studio Art Classes

## Street Corner of Minneapolis

My work, "Street Corner of Minneapolis," shows the famous Minneapolis skyline in the background against a vibrant clear blue sky. In the center, there is a street corner store surrounded by an auto shop, Somali restaurant, and apartment buildings and houses. This drawing was meant to represent a view of Minnesota that is not typically shown in our state Capitol. I drew this to display some of the culture that is alive in south Minneapolis which happens to be where I live.-Ebony Owens



## Minnesota's Past and Future

I wanted to reflect Minnesota's past and future (or my idea of the future) to show a timeline. On one side, I have a Native Dakota chief, because they were one of the first Indians in Minnesota and Minnesota was named in their native language. I also have trees and grass and deer because I Minnesota was mostly forest with animals before. I also had a stream with a loon in it because it is the state bird. I did the state's flower and colored it so it could stand out. In the middle, I have a quote that I think relates to the Indians. Because even though the Native Americans don't have the same way of living anymore, they still have the traditions of their ancestors living in their hearts. Then I did another drawing of another Native American to show how they have changed with the times as in their way of dressing. I did another stream with a bridge because most streams have bridges now and aren't natural looking like before, with animals. Instead of trees, I put buildings because I feel like Minnesota will probably continue to have more buildings and not enough wildlife. -Precious G.



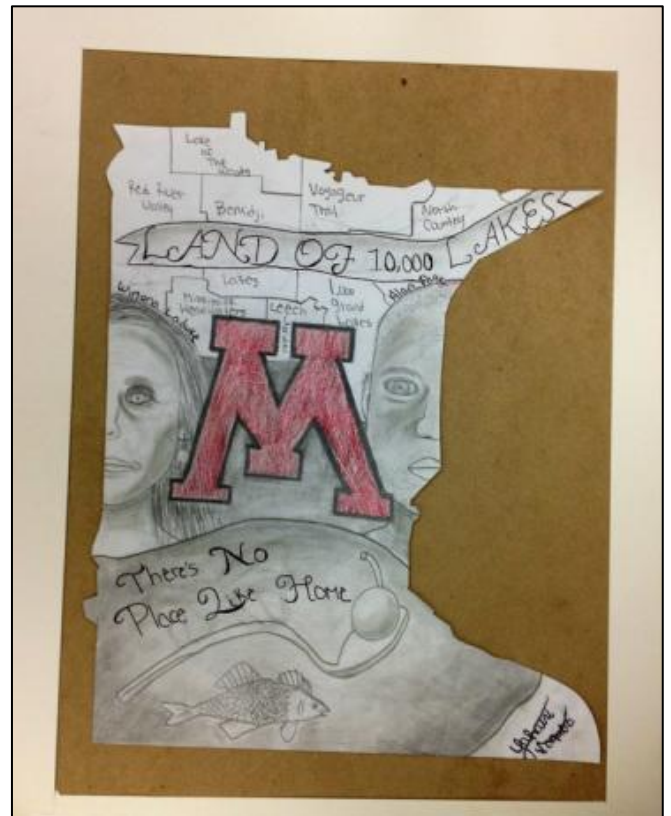
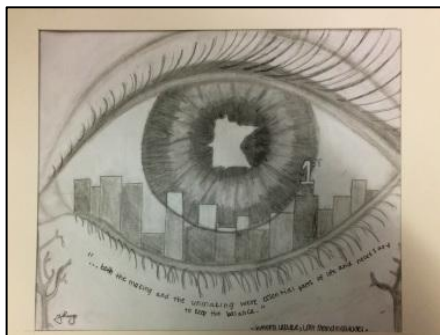
## My 10,000 Lake Home

I drew two people who I thought were important to Minnesota: Winona LaDuke, a vice presidential candidate, and Alan Page, who was a Minnesota Supreme Court Justice. I wrote the quote: "There's no place like home" because I've lived in Minnesota for my whole life, almost 16 years. I want to move and live in another state, but I know I will miss living in Minnesota. It will always be my home. I drew the Spoon and Cherry because I think it is the most known art piece in Minnesota. I went to see it for the first time on my quinceañera. I have always wanted to see it up close but didn't get the chance until my special day. Every time I pass it, it brings good memories back. -Yahairi V

## Beyond the Eyesight

The meaning behind my artwork is to show the beauty of Minnesota through the eye. I chose the eye because you see everything from it and the eye is a beautiful part of your face. A hidden story I am telling about Minnesota is the buildings. The building with the Number 1 was the first bank building in Minnesota. The buildings in the eye are the buildings from Saint Paul. My drawing is relevant to Minnesota and the people because it shows the buildings that people work and live in. It shows the state of Minnesota in the middle because that is where we live. It's important to show this artwork to the Governor because this drawing is peaceful and calming. This drawing is not about war and it doesn't have red/blood. It brings out the beauty of Minnesota and how it shows through your eye.

-Cynthia V.



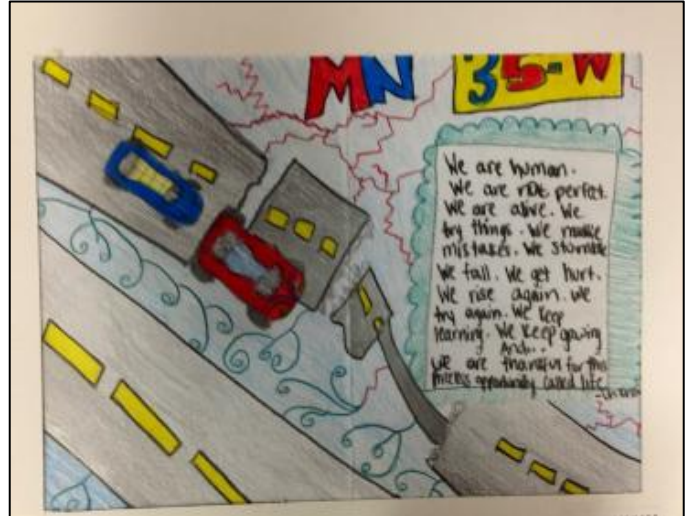
## Minnesota Art Drawing

The reason I chose to do Prince and a wolf is because Prince is from Minnesota and the wolf is Minnesota's number one animal. The reason I put Prince in my drawing is because to me he looks like Michael Jackson. The other reason I put a wolf in my drawing is because every time I go to the zoo with auntie and my cousin, we will always try to go look at the wolf. -Malcolm R.



## Renewal

The story I am telling in my artwork is about the tragedy that happened August 1 some years back. The 35-W bridge had collapsed and 13 lives were taken and many were left injured. My drawing is relevant to Minnesota and the people who live here because it teaches our community to stand our ground and speak up if something of that matter were to happen again. Also, events like this will make construction workers take their jobs more seriously. It is important for me to share my story with the Governor because I want him and others to know how memorable these events in history should remain. The meaning of the red zig-zagged line is to resemble damage to the first bridge, and the green swirly lines resemble peace and renewal of our current bridge today.- Fatou S.



## Wolves in the Woods of Minnesota

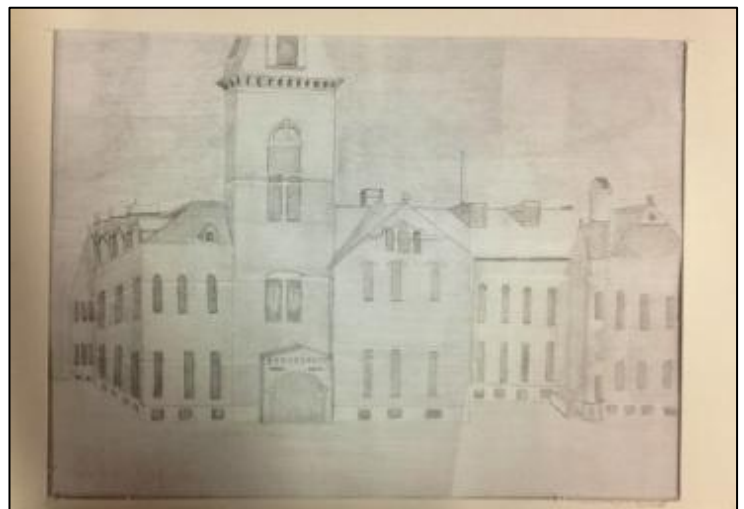
I chose to draw wolves because Minnesota is a big wolf state. What my drawing is trying to tell is that long ago, wolves in Minnesota were hunted and killed. The wolf population rapidly decreased, but the wolf population now is increasing because they protect wolves. Our wildlife needs to be treated with care, otherwise Minnesota will lose one of its biggest features. I think it is important to share this with the government because I think our animals have been dying lately and we need to take better care of them. -Joshua Y.



## Public School of Saint Paul

My work shows the first Saint Paul public school. Back then, rich people were able to afford private school, where there were no public schools to learn in. So mostly all rich people had an education. Throughout our history, education is part of everything we do. When newborns come, they need to know the things of generations before them. That is how most historical events are passed down from the early years of Earth.

-Chad V.



## Minnesota's New Future

Hmong culture is a big part of Minnesota now. A big portion of Minnesota is now Hmong and more will just keep coming. Personally, I chose it because my family is Hmong and saw that Hmong people were coming to Minnesota. Pictures rarely show religious based things and since we're talking about Minnesota, why not put a popular religion in the painting? The green side of the picture shows what Hmong have and do in their own country, then combining it with the yellow side which is what Minnesotans have. The Hmong brought their culture to Minnesota and shall now stay here.- Robins V.



## Art of Minnesota

I chose to draw a tree on the side because the tree is one thing that gives us gravity to breath. The tree also makes me think of Minnesota's different seasons. I chose to draw the Minnesota state and the bird and the flower because it represents Minnesota. The person inside Minnesota is Vang Poa. He represents to me the first Hmong guy that take us Hmong people to a freedom state to have a good life just like others. I chose to draw an eagle because the eagle is one thing that make me remember when I first came to the U.S.—by telling me that here I come to a freedom state that **I'll try my best ... The thing I am talking about is getting a good education.**-Mai X.



## Built in Minnesota

The Mayo Clinic contributes a lot to researching future cures for sicknesses and provides care for people in need. It's a hidden story in Minnesota because it isn't something that tourists visit. The clinic deserves recognition because of its endless aid to many. This clinic hasn't treated me as a patient, but reading stories of its successful cures and studies has left me inspired to possibly be a doctor.

-Dana T

